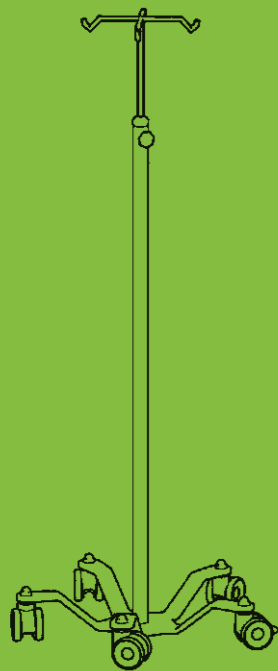


INFUSION PUMP STANDS

STANDARD / STAINLESS /
2 HOOK / 4 HOOK

INFUSION PUMP STANDS

STANDARD / STAINLESS /
2 HOOK / 4 HOOK



* Model shown: FV18002/FV18005.

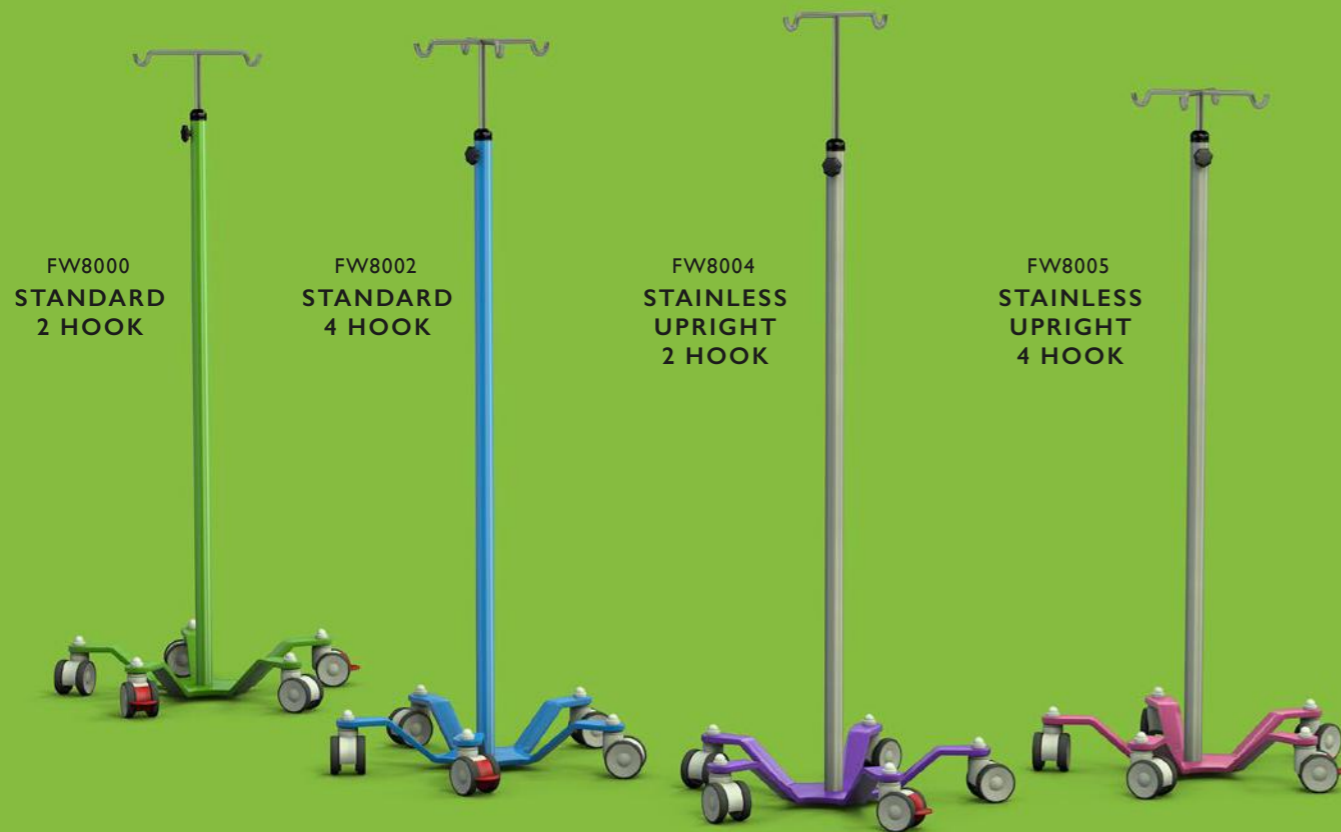


Durable. Reliable. Steady.

Constructed from heavy-duty steel and optional stainless steel, our Infusion Pump Stands are extremely durable, easy to clean and very safe due to their low centre of gravity 5-leg base.

The 5 high quality triple-bearing castors incorporate 2 brakes to ensure the stand always stays put!

[Explore our Infusion Pump Stand range >](#)



What is included on the base models?

Once you have chosen your desired Infusion Pump Stand model, choose the colour of the base at no extra cost to have a spark of colour.

If you opt for the mild steel upright, you can also choose from 8 available colours to paint your stand in. Our durable nylon powder coat paint system is resistant to knocks and scrapes.

- Topple resistant, low centre-of-gravity base
- Adjustable IV pole height
- 5 ultra durable castors with 2 brakes
- 2 or 4 hook IV pole options
- Nylon coated steel or stainless steel upright options



WHY BUY FREEWAY? BECAUSE ALL

THESE FEATURES ARE STANDARD!



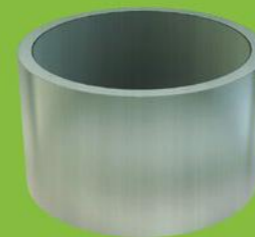
Colour Choice

Choose from a selection of 8 colours to have the base of your Infusion Pump Stand or the pole itself (if you opt for mild steel) painted in.



Anti-topple base

Our 5-point low centre of gravity base ensures the stand remains firmly on the ground and upright in its day-to-day use. With 2 castors featuring foot brakes, you'll be confident the pump stand will not end up somewhere else when you turn around!



Stainless Steel Upright

Choose the stainless steel upright Infusion Pump Stand for the longest product life cycle. All stainless steel for our products is medical grade.



Super-Tough Nylon Paint

If you opt for the mild steel upright, we'll protect it from everyday scrapes with an extremely durable and easy-clean nylon powder coat paint finish.



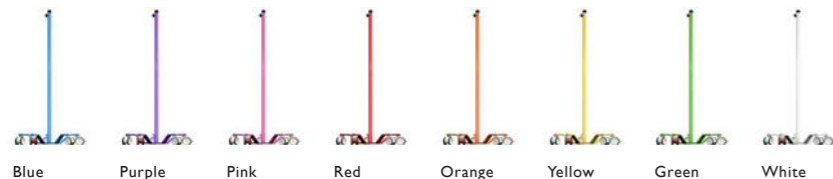
Ultra Heavy-Duty Castors

Featuring a triple ball-race bearing set, our castors and rubberised tyres are built to last and ensure effortless, reliable and sturdy use.

INFUSION PUMP STAND - 2 HOOK



BASE/UPRIGHT COLOURS (included in price)

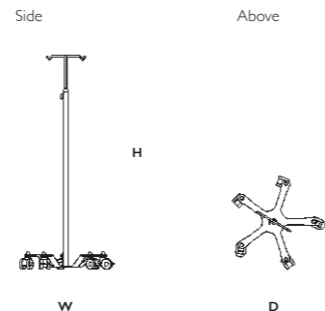


PRODUCT CODE
FW8000 Infusion Pump Stand (2 hook)

Safety and stability are paramount on Infusion Pump Stands which is why our stands have been designed to have an ultra-low centre of gravity with our 5-point base. Have confidence your IV poles are stable upright and topple resistant.

DIMENSIONS
Height = 1200-1925mm Width = 550mm Depth = 550mm

PRODUCT ELEVATIONS



NYLON COATED MILD STEEL FRAME

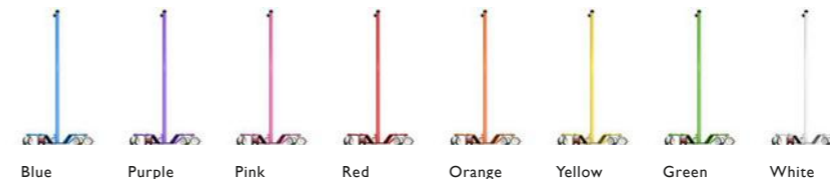


These products feature an easy-to-clean powder coated frame which is much harder wearing than conventional paint systems.

INFUSION PUMP STAND - 4 HOOK



BASE/UPRIGHT COLOURS (included in price)

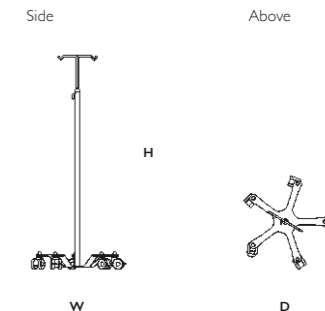


PRODUCT CODE
FW8002 Infusion Pump Stand (4 hook)

The standard Infusion Pump Stands are available in 8 different colours and the super tough nylon paint used on the frame is more durable than regular paint systems.

DIMENSIONS
Height = 1200-1925mm Width = 550mm Depth = 550mm

PRODUCT ELEVATIONS



NYLON COATED MILD STEEL FRAME



These products feature an easy-to-clean powder coated frame which is much harder wearing than conventional paint systems.

INFUSION PUMP STAND (STAINLESS UPRIGHT) - 2 HOOK



BASE COLOURS (included in price)

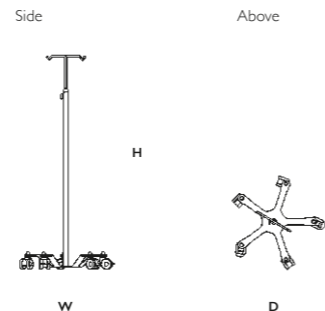


PRODUCT CODE
FW8004 Stainless Infusion Pump Stand (2 hook)

For ultimate durability and length of life choose one of the stainless steel upright models. Quality is never overlooked so only medical grade stainless steel is used for this vital hospital addition. It is easy to clean and can be adjusted accordingly.

DIMENSIONS
Height = 1200-1925mm Width = 550mm Depth = 550mm

PRODUCT ELEVATIONS



STAINLESS STEEL UPRIGHT



We use only medical grade stainless steel for selected parts and products.

INFUSION PUMP STAND (STAINLESS UPRIGHT) - 4 HOOK



BASE COLOURS (included in price)

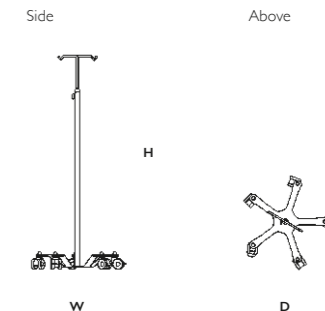


PRODUCT CODE
FW8005 Stainless Infusion Pump Stand (4 hook)

All Infusion Pump Stands are fitted with ultra heavy-duty castors for responsive manoeuvrability as well as 2 fitted brakes so your stand will stay in place.

DIMENSIONS
Height = 1200-1925mm Width = 550mm Depth = 550mm

PRODUCT ELEVATIONS



STAINLESS STEEL UPRIGHT



We use only medical grade stainless steel for selected parts and products.

Freeway Medical

Unit 15-16,
Colthrop Business Park,
Colthrop Lane, Thatcham,
Berkshire, RG19 4NB.

Tel: 01635 866 717

Fax: 01635 866 347

Web: freewaymedical.co.uk

Email: sales@freewaymedical.co.uk