



The all-new  
Emergency Range

-  Easy-clean
-  Easy-wheel
-  Practical storage
-  Anti-tamper system
-  Easy-view consumables
-  Modular construction
-  Over-panel system
-  Full-width storage
-  Hook-over accessories

## An emergency range based on solid foundations

The new Emergency & Airways Cart line up is designed to provide a compact yet highly versatile platform to allow users a set up to suit their own needs in their own environments.

There is a choice of Widths, heights and storage configuration styles to allow everyone to find the perfect balance meeting their needs along with their budget.

Functional steel work surface

Free-of-charge configurable drawer options

Anti-tamper security features

Hook-over accessories rail as standard



Ultra durable premium castors



Replaceable coloured easy-clean drawer fronts

**FREEMWAY**   
**Medical**  
 Your Concept is our Creation...

The all new line up features several new design features as standard, the key element of which is its new modular line configuration.

Each part is individually removable ensuring that every item is then individually replaceable, so the cart can be upgraded through out its life to cope with the ever changing needs - improving the life cycle costs as the cart can adapt to suit the future requirements at a low cost.

**Work top** - can be removed easily by 2 thumb screws, and can be interchanged for another style or material work surface.

**Side panels** - regardless if the units have clear trays and metal drawers the side panels can be removed for deep cleaning, damage replacement or simply to upgrade the specification of the cart, so if you have a clear tray cart, you could easily upgrade it to the metal drawer cart.

**Rear enclosed panels** - Where fitted, these can be removed as soon as the work top is removed, or simply added to any of our carts easily to provide an additional flat sided easy to clean enclosed surface.





Models shown have optional 4-wheel braked castors.

## 3100: Vari-Carts

Easy-view consumables storage for secure or open ward environments.

The new clear tray system provides a highly visible and quick access to emergency equipment, shown here to the left in the 2 most popular configurations.

Open Access System – for routinely accessed equipment. This system provides an ordered and accessible platform for emergency care and intubation equipment, with tray combinations that can be reconfigured to suit users exact preferences. Trays and baskets have a unique stop system to prevent them falling out unintentional, but can still be removed easily for cleaning.

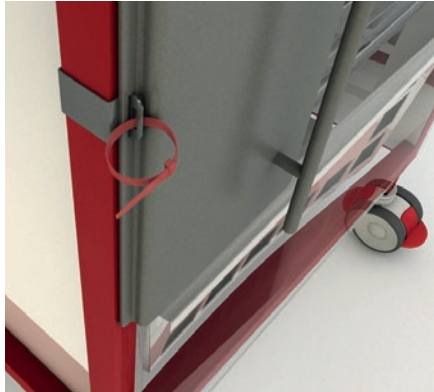
**Enclosed Access System** – using the same style of clear trays and baskets for easily accessible storage but with the optional fitment of an enclosed rear panel and clear front door, maintaining a clear view to the storage but protecting it using the enclosed panels. Whilst maintaining the carts lightweight, compact and highly manoeuvrable design.

Ensure levels of critical or non-safe stock are always available when you need them most.



Simple anti-tamper measures protect sensitive stock from unrecorded use.

Anti-tamper fitments are a simple and easy to use addition to the enclosed cart system, allowing users to control access to the cart, and at the same time provide accountability for re-stocking, secure in the knowledge that when the cart is needed all contents are present for the emergency situation.



It works by using a simple break away tag system that does not hinder emergency fast access, but provides a visible stock checking system with individual numbered tags so they can be tracked.



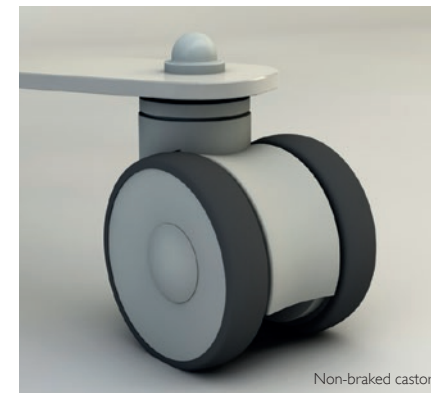




# Numerous storage combinations available or easily retro-fitted to adapt with a changing environment.

Clear tray, White baskets and Metal drawer depths are always a free of charge option, so users are free to choose what combination suits their needs best without any additional costs.

A highly important factor to any transport cart is how easy it will be to move around a busy hospital and for how long, and so to provide the best solution the Emergency Cart is fitted with highest quality 100mm twin wheel castors.



Non-braked castor

Each castor is completely sealed for easy cleaning with sealed bearings in each of the twin wheels for rotation and a third sealed bearing for swivel, the design is specially created to reduce the impact of dust build up and will provide the user with a cart that is very easy to manoeuvre year after year with no maintenance.

Superior quality ball-raced castors ensure life long manoeuvrability.

# Advanced modular construction ensures maintenance and repair is inevitably cost-effective.



User replaceable parts can be changed in minutes, without tools. Either to upgrade or repair.

The ability to adapt and change over the life cycle of the product is a key feature in any modern medical equipment, these carts are at the forefront of design principle, where by our clear tray systems can be broken down into individual parts, quickly, simply and without tools.

The main principle behind this is to allow users to configure the carts, over their life time, so if purchased in one particular specification the unit can be added to and changed over its life time.

Using the simple system of 4 thumb operated fitments, the cart can be dismantled quickly without tools, allowing items like work tops to be upgraded for stainless steel or TRESPA® for example, all at low cost, and sent from stock for easy self fitment in moments.

- **NO** engineer call outs.
- **NO** high cost replacement for damaged parts.
- **Longer life** cycle as our carts can be upgraded for change of use or simple repairs.







## 2190/3190: Procedure trolleys

Reliable concealed storage options for emergency environments.

Where greater protection and concealment is required, we are able to offer a fully enclosed metal drawer emergency system, providing access to the internal storage via easy glide ball race drawer runners capable of holding 25kgs of weight per drawer, designed to cope with the heavy 24hr use required.

The systems are versatile in height and width, allowing the users to find the perfect solution to meet their needs, whilst maintaining the modular principle of the clear trays system carts, so each individual part can be removed and replaced if required to adjust for future use or improvement.

Models shown have optional 4-wheel braked castors.

# Our compact concealed units available in two user-friendly heights.



Practical storage and quality components provide reliable, long life service.

For compact environments we have the compact emergency cart system that offers the same drawer configurations as the full width examples with the advantage of the smaller foot print.

The Compact carts have the same simple modular design where parts can be removed. The user has the choice to select the height of the unit they prefer, as the FW3190 is available in the -6 high ( 920mm) and -7 high ( 1025mm) the difference ( aside from the height) is the provision of an extra drawer space in the -7 design.

Drawer combination choice is a free of charge option too. The 3 drawer depths available are listed below:

- 110mm** - Single-depth drawer
- 224mm** - Double-depth drawer
- 330mm** - Treble-depth drawer

The frame height of -6 or -7 means that the unit could hold either 6 or 7 Single height drawers (110mm deep) or could choose to swap the bottom 2 units for 1 x double height drawer ( 224mm) at no extra cost. Of course it also allows the user to change the drawer depths though out the life of the product making it an even more cost effective unit.



**3190-6**  
500mm wide,  
6 drawer-space  
Procedure Trolley

**3190-7**  
500mm wide,  
7 drawer-space  
Procedure Trolley







**2190-6**  
700mm wide,  
6 drawer-space  
Procedure Trolley

**2190-7**  
700mm wide,  
7 drawer-space  
Procedure Trolley



# Our full-width storage option. Again, available in two popular heights.

For large volumes of emergency storage we have the FW2190 range, that offers larger internal storage space to cope with the larger requirements of the unit.

The full width carts have the same simple modular design where parts can be removed. The user has the choice to select the height of the unit they prefer, as the FW2190 is available in the -6 high (920mm) and -7 high (1025mm) the difference (aside from the height) is the provision of an extra drawer space in the -7 design.

Drawer combination choice is a free of charge option too, so the 3 drawer depths available are:-

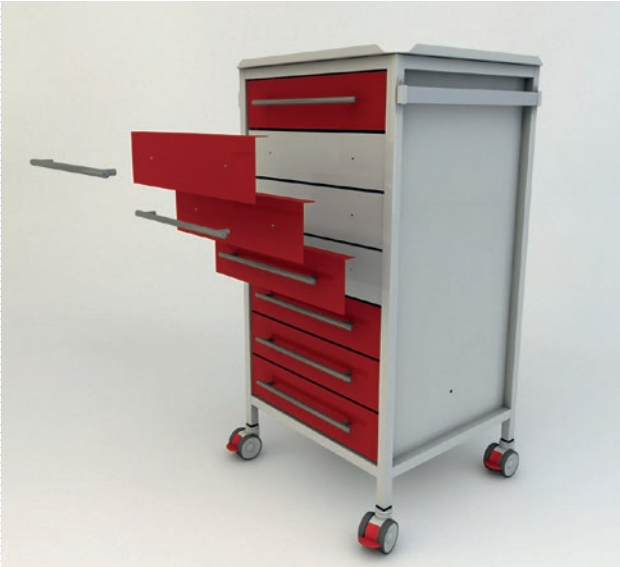
- 110mm** - Single-depth drawer
- 224mm** - Double-depth drawer
- 330mm** - Treble-depth drawer

The frame height of -6 or -7 means that the unit could hold either 6 or 7 Single height drawers (110mm deep) or could choose to swap the bottom 2 units for 1 x double height drawer (224mm) at no extra cost. Of course it also allows the user to change the drawer depths though out the life of the product making it an even more cost effective unit.



The full-width trolley offers high capacity storage, yet is still very manoeuvrable

# Endless drawer configurations and future adaptability possible.



Clever over-panel system creates future change of purpose a possibility.

The FW3190 & the FW2190 in both the 920mm & 1025mm height formats have the same advanced design features for the drawers.

Each drawer is prepared to take a key-less lock as standard from the factory, so if the users needs change over the life time of the product they can simply add in a key-less lock simply and easily.

Locks are available from stock and can be sent as a self fit item for next day delivery.

Each individual drawer is also fitted with a separate front cover panel that provide the individual colour, commonly red but also available in a wide choice of other colours.

The front is held in place by the handle, and can be swapped if damaged or simply removed for replacement with another colour or for deep cleaning.





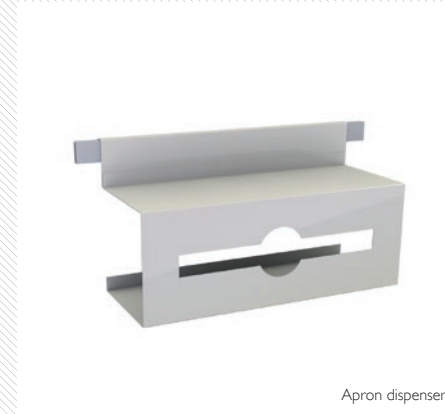
# The Resus Range of hook-over accessories. User-fitted\*, without tools, at any time.



Quickly and economically upgrade a unit by simply hooking on any accessory module.

To increase the carts versatility they come with durable Aluminium anodized universal medical rail, on both the left & right hand side, this is resistant to damage and wear.

The rail is designed to support a vast range of standard and customised accessories allowing the user to add, remove and replace the accessories they require in the position they need them, in a flexible and interchangeable way.



# Technical Specification / Contact Information.



## Summary of Features

- Range of available widths & heights of storage.
- Range of storage configurations from clear trays to enclosed ball race drawers.
- High quality castors for easy manoeuvrability.
- Highly adaptable design, that can cope with future change, deep cleaning and damage.

## Optional

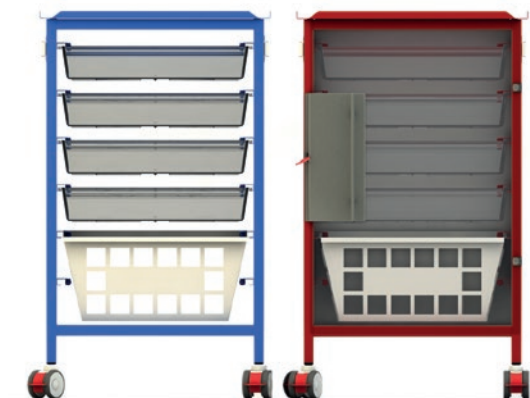
- Push handle
- Hook-over accessory range
- 4-wheel braked castors
- Digital lockable drawer

## Dimensions (WxDxH)

<b>Model 3100</b>	510 x 490 x 920mm
<b>Model 2190-6</b>	720 x 490 x 950mm
<b>Model 2190-7</b>	720 x 490 x 1050mm
<b>Model 3190-6</b>	510 x 490 x 950mm
<b>Model 3190-7</b>	510 x 490 x 1050mm

## Paint Choice

- Drawer front and structural framework are painted in the colours shown as standard, but any additional metal surface can be painted in any colour of your choice.



## Contact Information UK

Freeway Medical (Trading as Chromis UK Ltd)

### Address:

Unit 7, Pipers Industrial Estate,  
Pipers lane, Thatcham, Berkshire, RG19 4NA.

**Phone:** +44 (0)1635 866 717

**Fax:** +44 (0)1635 866 347

**Email:** sales@freewaymedical.co.uk



A solid performing,  
reliable and durable  
product collection.

Our all-new  
Emergency Range.